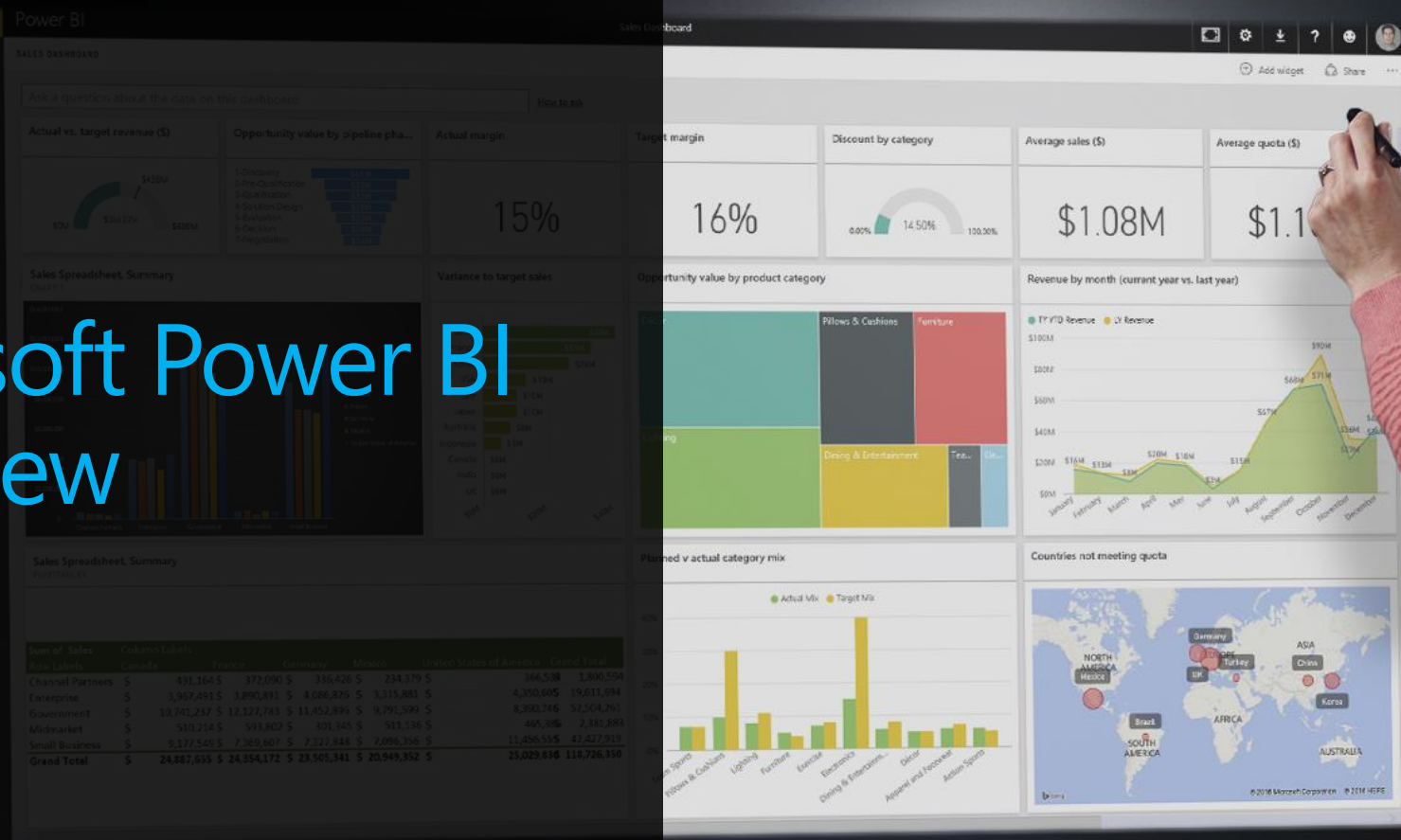


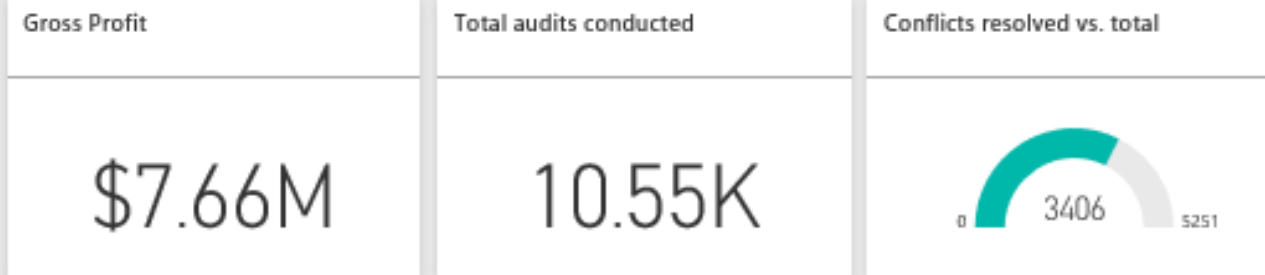


# Microsoft Power BI Overview



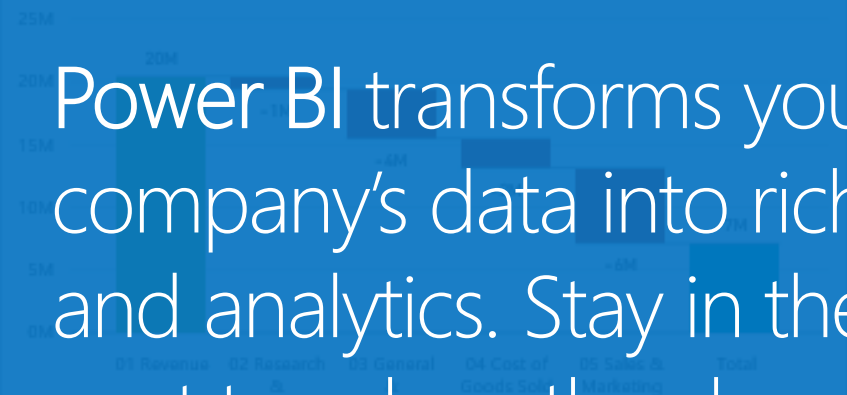
# Power BI

Power BI transforms your company's data into rich visuals and analytics. Stay in the know, spot trends as they happen, and push your business further



Income with revenue and expenses

● Increase ● Decrease ● Total



Gross sales by country



Server vulnerabilities by country

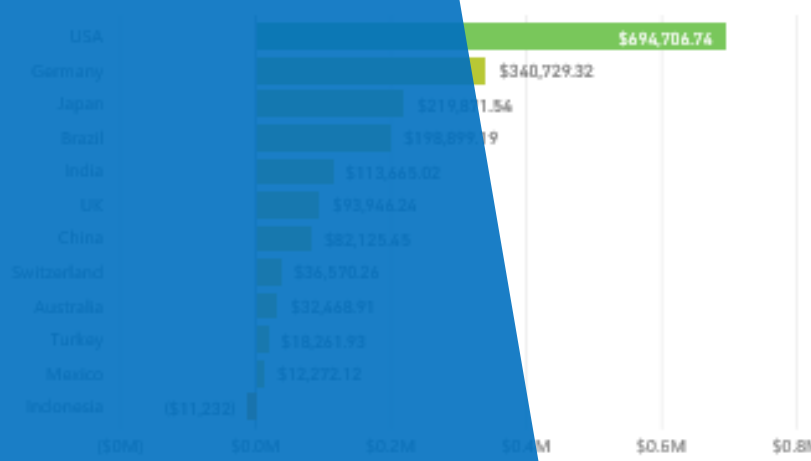


Variance to budget (\$) by country

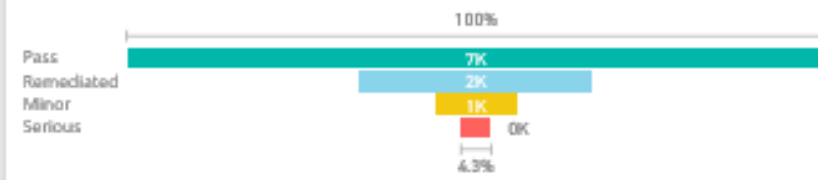
Country ● Australia ● Brazil ● Canada ● China ● France ● Germany ● India



Variance to budget (\$) by country

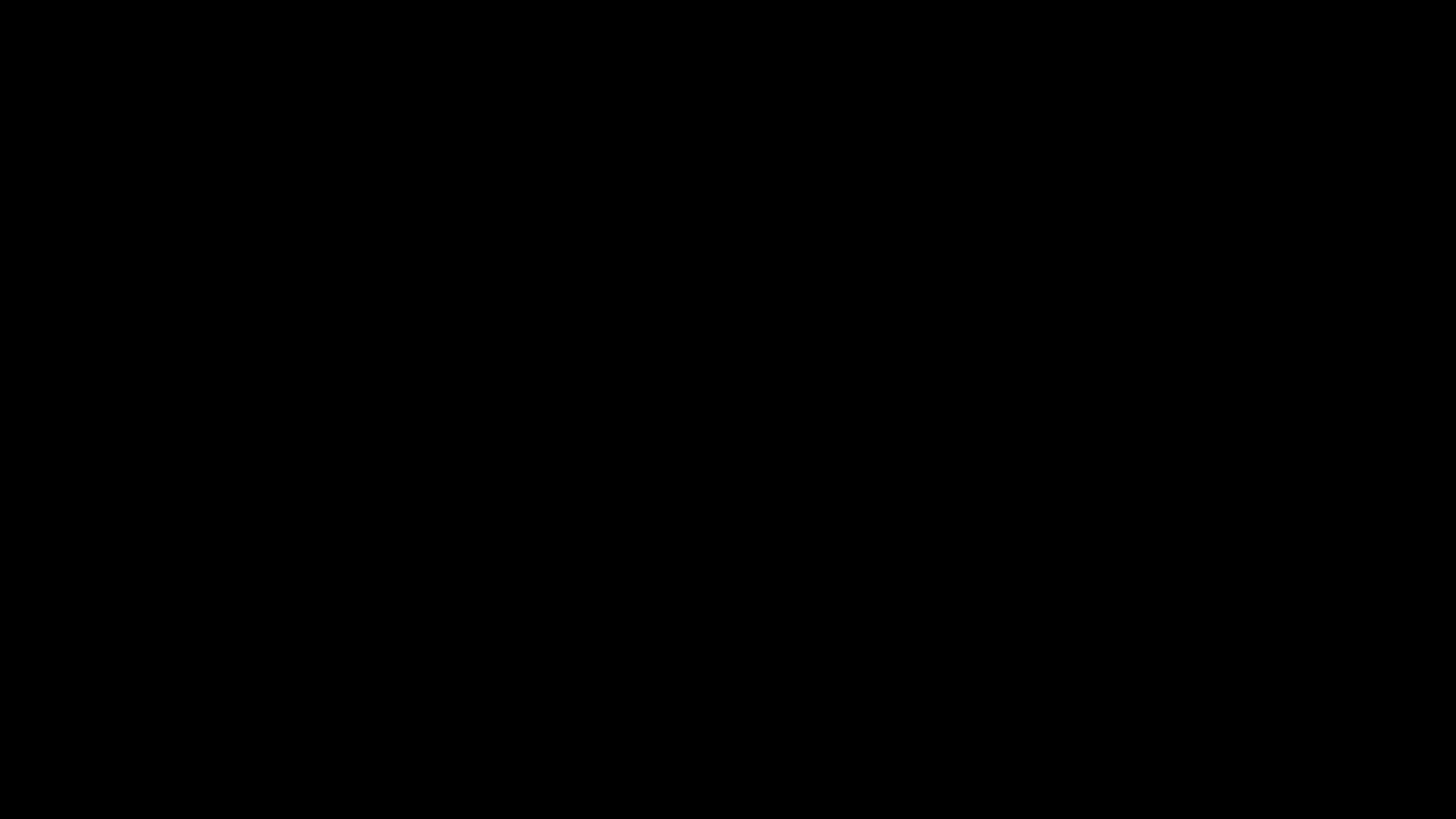


Audits by status description



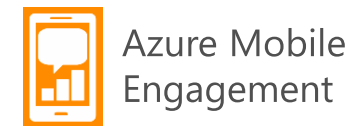
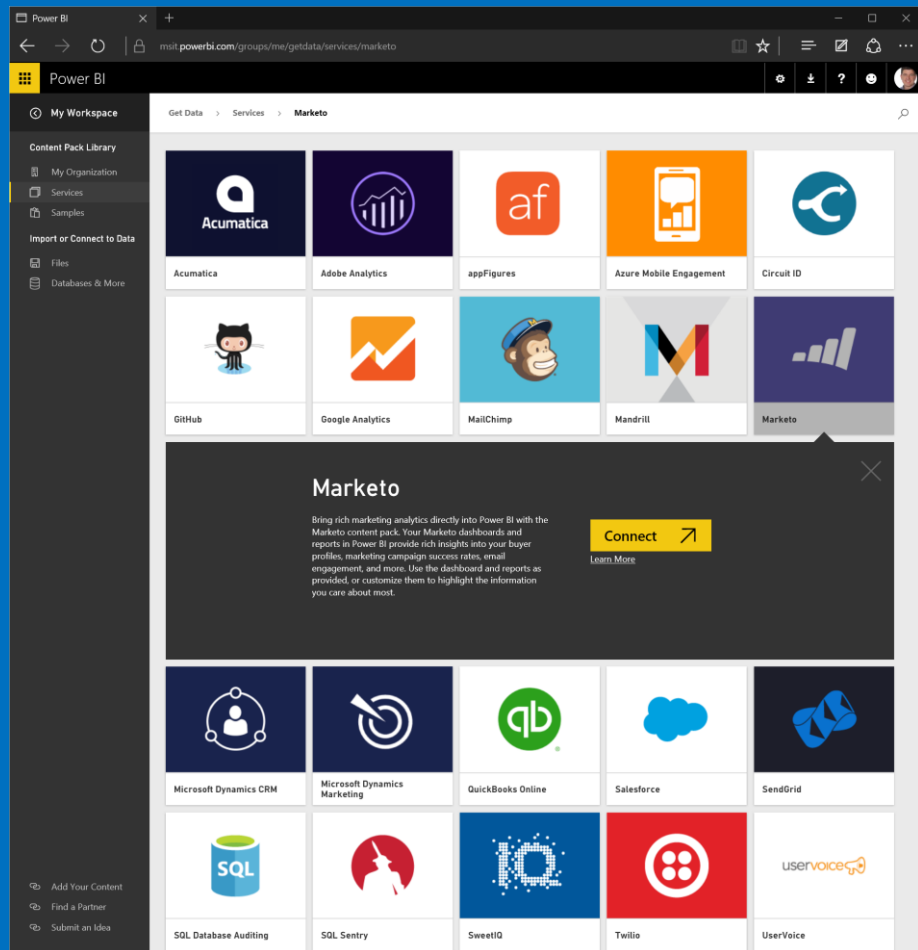
Server vulnerabilities by phase





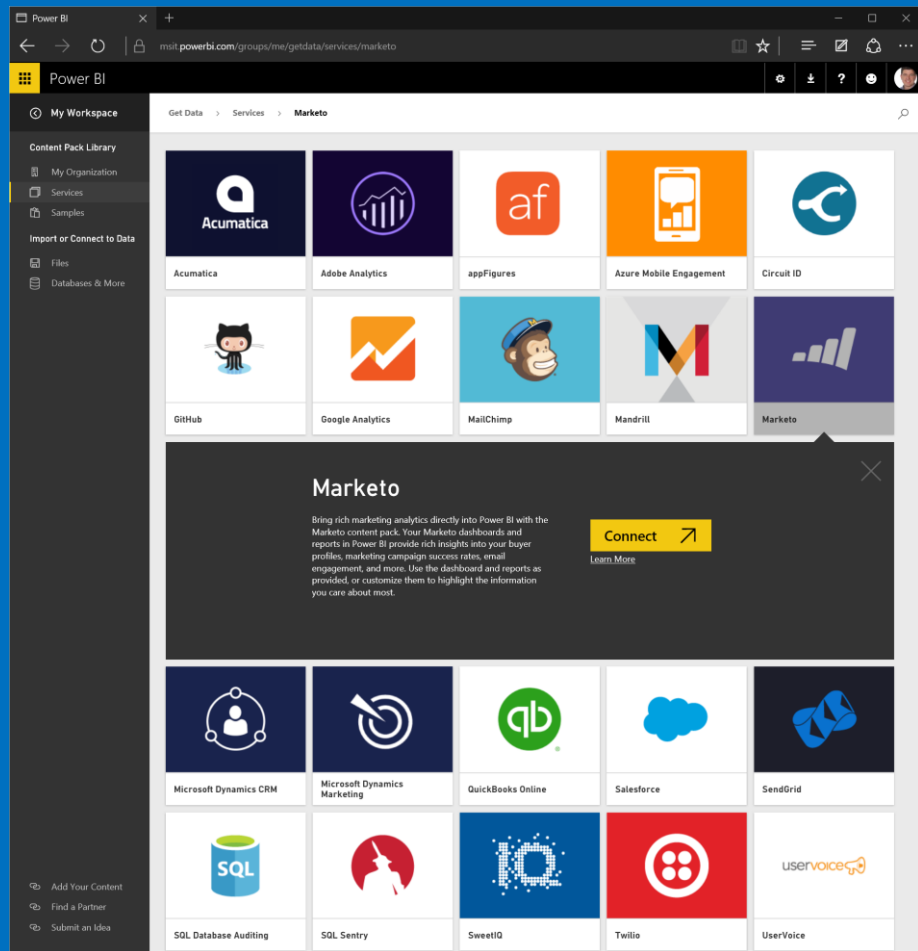
# Get started quickly

Pre-built solutions include dashboards, reports, and data models available out-of-the-box for SaaS services or built by your organization



# Get started quickly

Get Data, Analyze it and visualize it quickly.



## Get Data

All

File

Database

Azure

Other

### File

Excel

CSV

XML

Text

JSON

Folder

### Database

SQL Server Database

Access Database

SQL Server Analysis Services Database

Oracle Database

IBM DB2 Database

MySQL Database

PostgreSQL Database

Sybase Database

Teradata Database

SAP HANA Database

### Azure

Microsoft Azure SQL Database

Microsoft Azure SQL Data Warehouse

Microsoft Azure Marketplace

Microsoft Azure HDInsight

Microsoft Azure Blob Storage

Microsoft Azure Table Storage

Azure HDInsight Spark (Beta)

Microsoft Azure DocumentDB (Beta)

Microsoft Azure Data Lake Store (Beta)

### Other

Web

SharePoint List

OData Feed

Hadoop File (HDFS)

Active Directory

Microsoft Exchange

Dynamics CRM Online

Facebook

Google Analytics

Salesforce Objects

Salesforce Reports

ODBC

R Script

appFigures (Beta)

GitHub (Beta)

MailChimp (Beta)

Marketo (Beta)

QuickBooks Online (Beta)

SQL Sentry (Beta)

Stripe (Beta)

SweetIQ (Beta)

Twilio (Beta)

Zendesk (Beta)

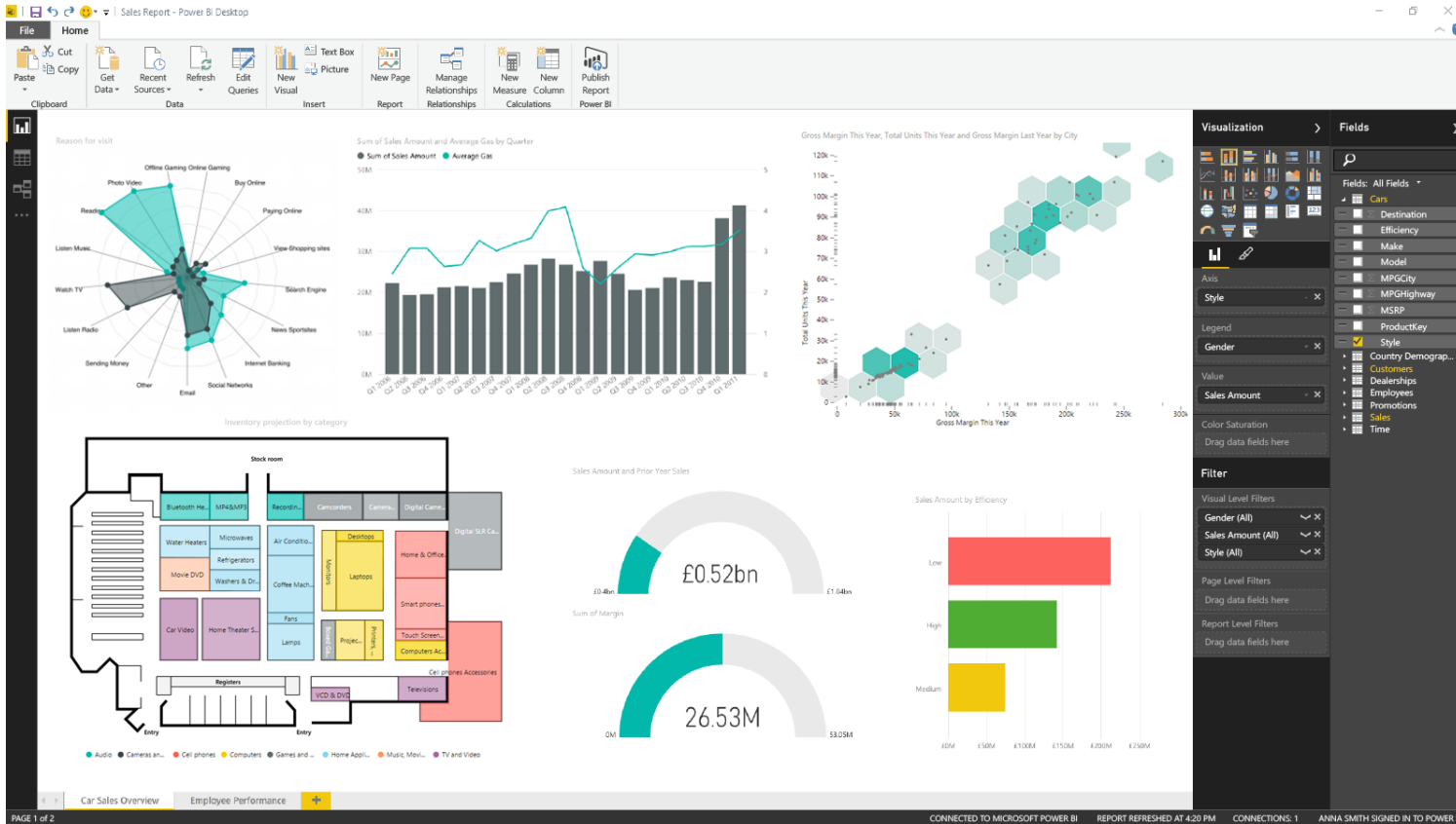
Smartsheet

Spark (Beta)

Blank Query



# Create powerful reports with Power BI desktop



**Discovery & exploration** – integrated experience for connecting and preparing data for visual data exploration

**Easy report authoring**— freeform canvas for drag-and-drop report design

**Custom visualizations**—create your own custom interactive visualizations

**R integration** - extend your reports with advanced analytics through support for R

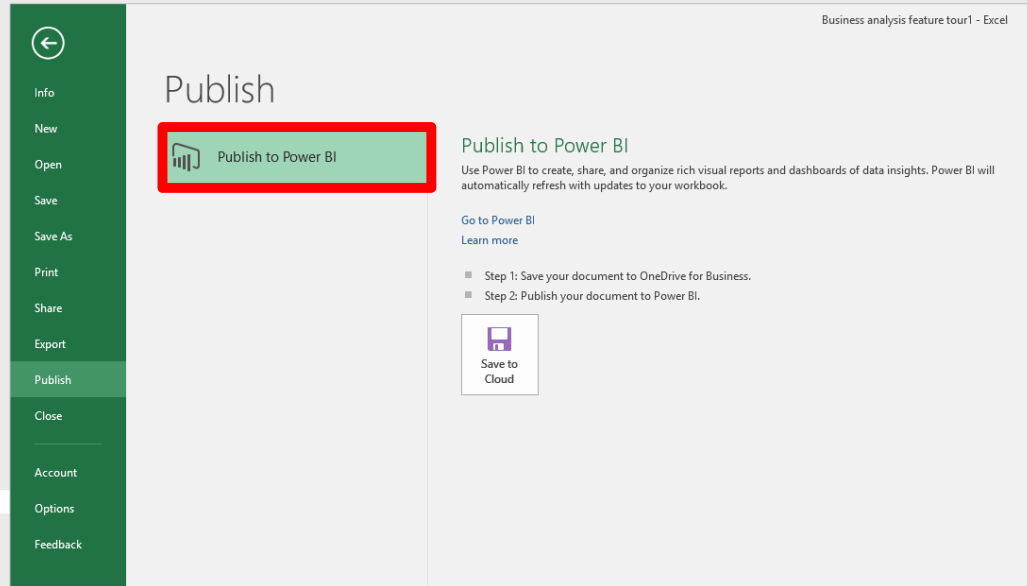
# Visualize any data any way with Power BI custom visuals



DEMO

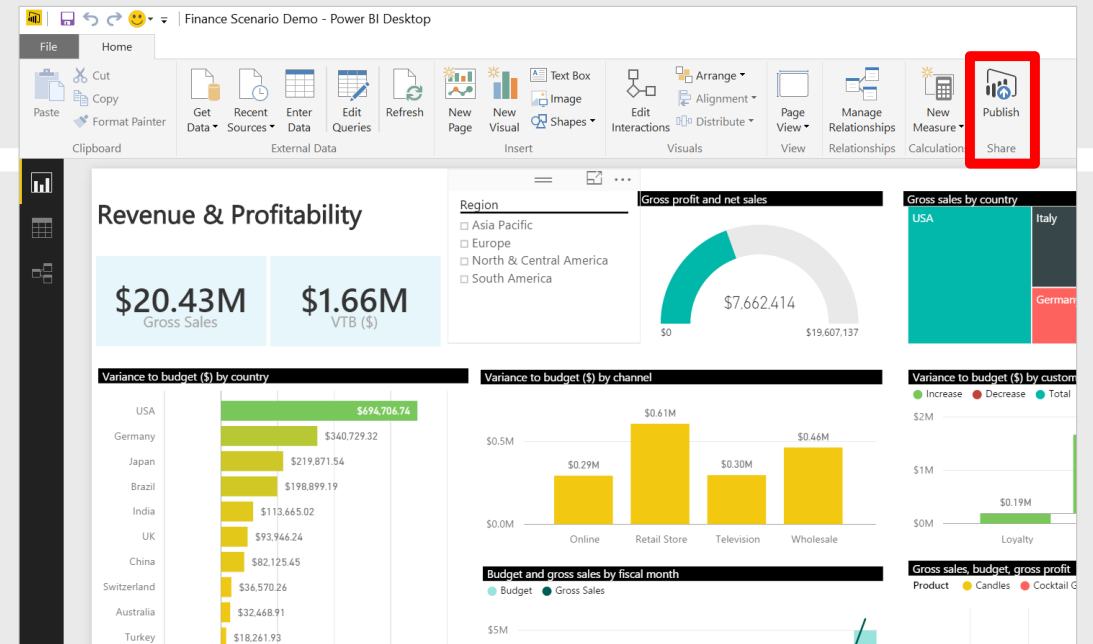


# One-click publish to Power BI



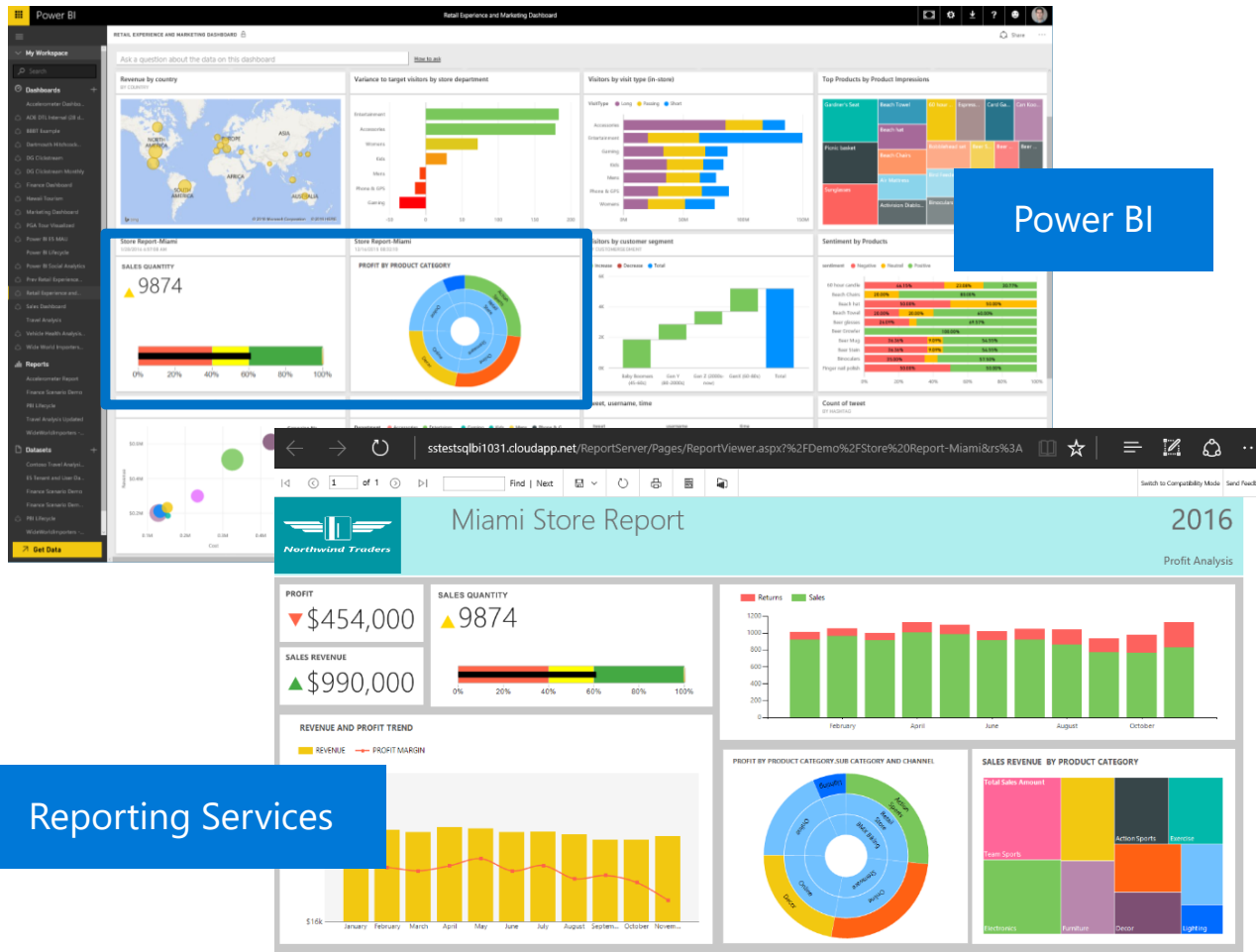
Excel

Power BI Desktop



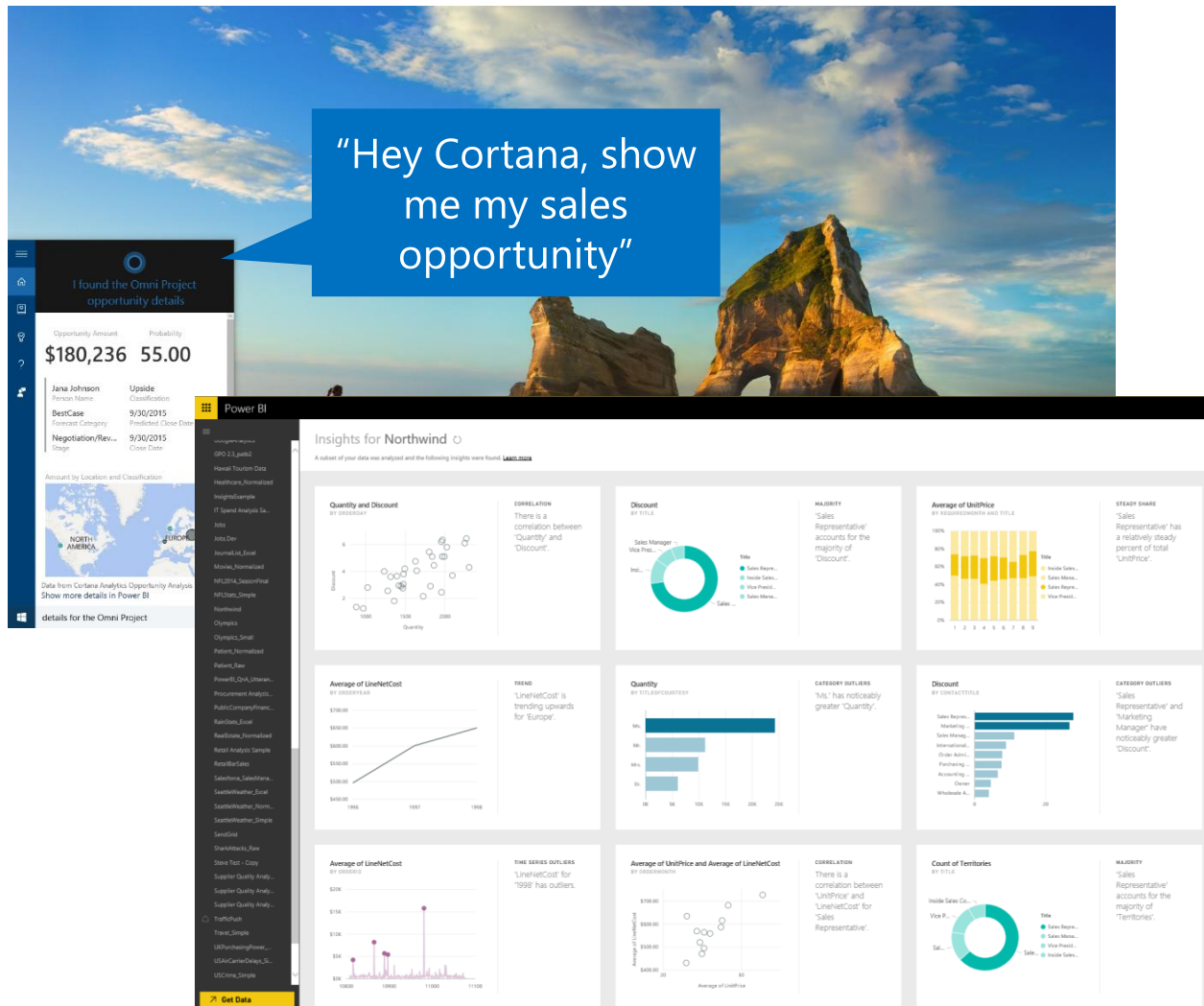
# Pin report items to Power BI dashboards

Get more from existing Reporting Services investments



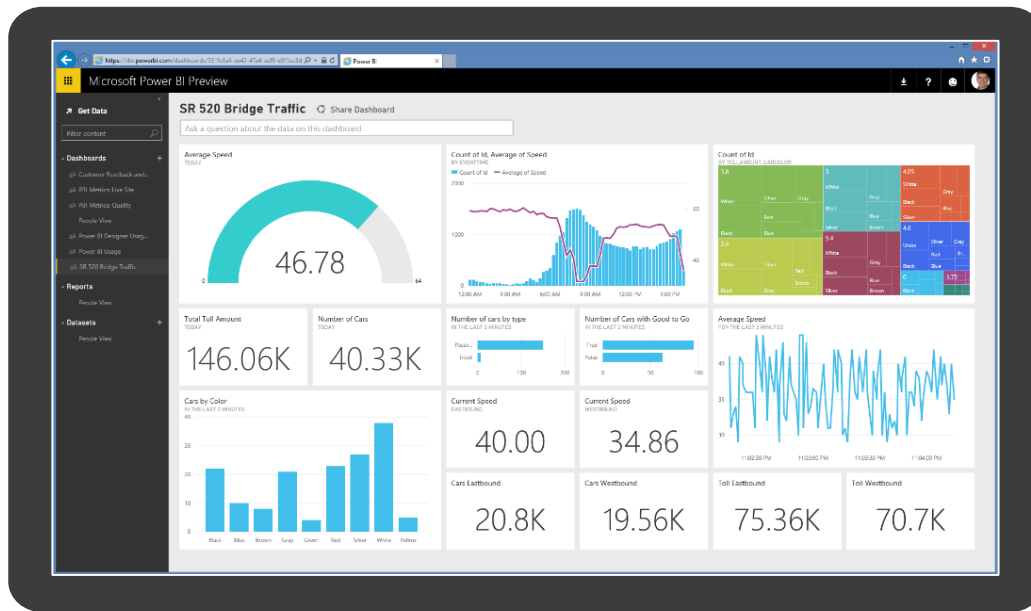
- ➔ Monitor the most important metrics and trends in one place
- ➔ Pin charts, gauges, maps, and images as tiles to Power BI dashboards
- ➔ Drill through to source reports
- ➔ Refresh tiles on a schedule

# Experience your data in new ways



- ➔ Natural language query—ask questions of your data more naturally
- ➔ Cortana integration—allows you to access your data from Windows 10
- ➔ Quick insights—auto discover patterns and insights in your data

# Live dashboards & reports



- ➔ Live dashboards provide a 360° view of your business
- ➔ Track your data in real-time with support for streaming data
- ➔ Drill through to underlying reports to explore in more detail
- ➔ Pin new visualizations and KPIs to monitor performance

# Mobile apps



Native apps for iPad, iPhone, Android and Windows devices



Receive alerts to important changes in your data



Share and collaborate with colleagues and take action



Windows



iOS



Android

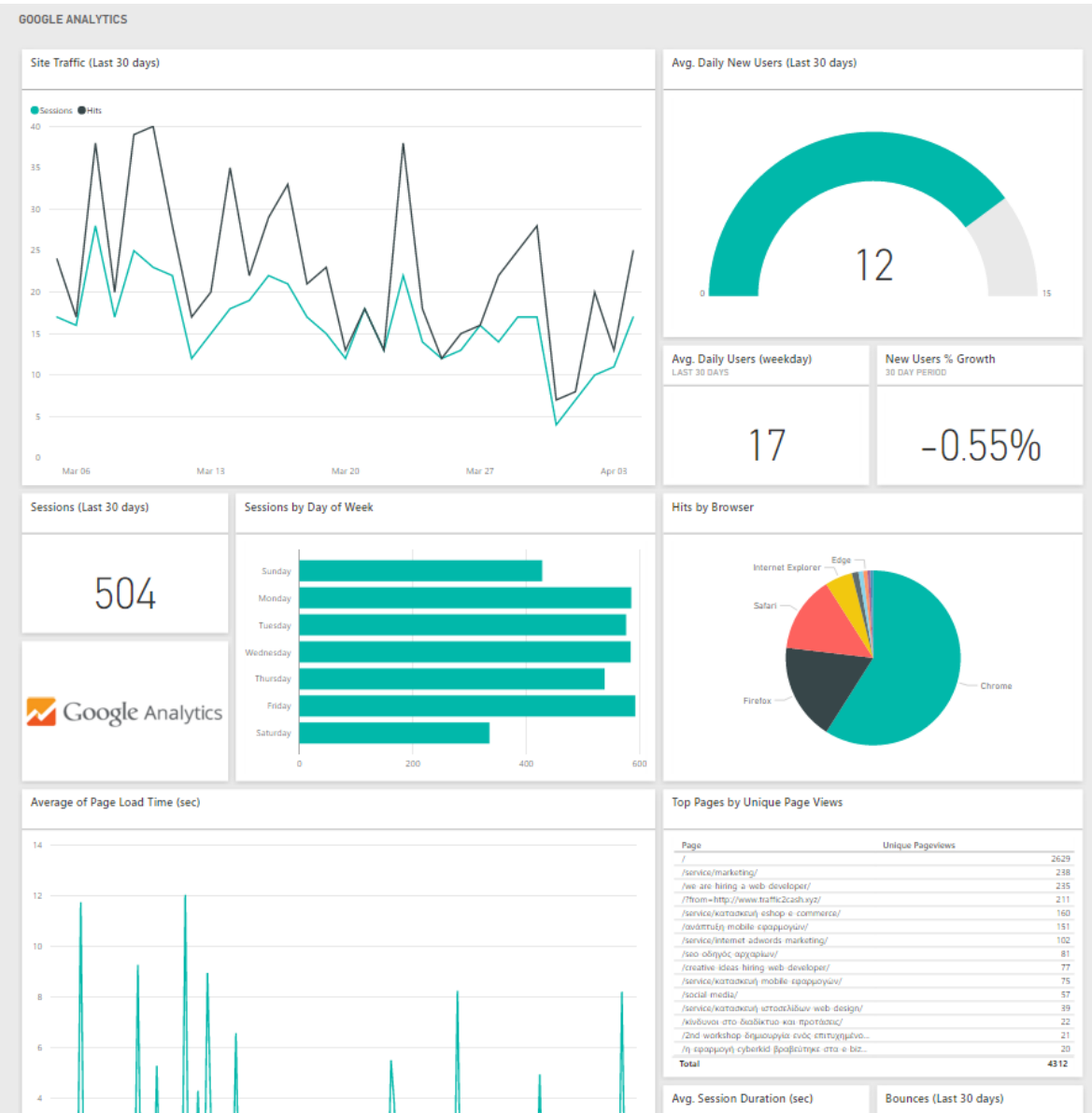
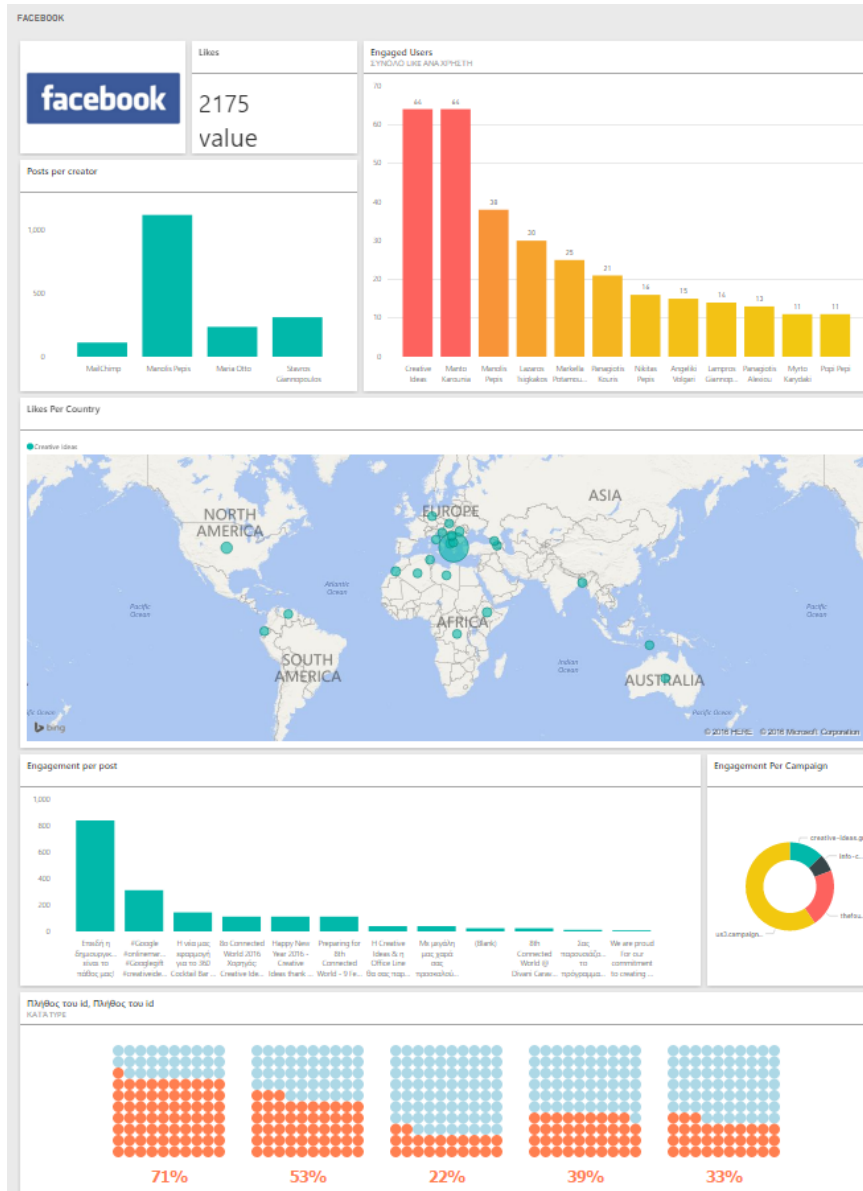


HTML5

DEMO



# Power BI for Marketing



DEMO

# Pricing

**FREE**  
POWER BI

Sign up

**€8.40** / user / month  
POWER BI PRO

Purchase

<u>Data capacity limit</u>	1 GB/user	10 GB/user ⓘ
Create, view and share your personal dashboards and reports with other Power BI users	•	•
Author content with the Power BI Desktop	•	•
Explore data with Natural Language <sup>1</sup>	•	•
Access your dashboards on mobile devices using native apps for iOS, Windows, and Android	•	•
Consume curated content packs for services like Dynamics, Salesforce, and Google Analytics	•	•
Import data and reports from Excel, CSV and Power BI Desktop files	•	•
Publish to web <sup>2</sup>	•	•

## Data Refresh

Consume content that is scheduled to refresh	Daily	Up to 8 times per day
Consume streaming data in your dashboards and reports ⓘ	10K rows/hour	1M rows/hour ⓘ
Consume live data sources with full interactivity ⓘ		•
Access on-premises data using the Data Connectivity Gateways (Personal and Data Management)		•

## Collaboration

Collaborate with your team using Office 365 Groups in Power BI		•
Create, publish and view organizational content packs		•
Manage access control and sharing through Active Directory groups		•
Shared data queries through the Data Catalog		•

It's easy to get started...  
**PowerBI.com**





# Thank you!



**Manos Pepis**

pm@creative-ideas.gr  
www.creative-ideas.gr  
+30 2103234617

