

# SharePoint 2013



Microsoft®  
SharePoint

# THE NEW WAY TO WORK TOGETHER



# SharePoint



Organize

Discover

Build

Manage

# Top 10 Benefits

- 1 An easier way to do business
- 2 A new way to work together
- 3 Document Management
- 4 Workflow Automation
- 5 Internet and other Public Sites
- 6 Keep your teams in sync
- 7 Search and eDiscovery
- 8 Business Intelligence
- 9 SharePoint On-the-Go
- 10 Rich Media Content



# SharePoint Capabilities

 Manage Risk	 Manage Cost	 Manage Your Time	 Create	 Control	 Protect
 Design	 Publish	 Engage	 Get Connected	 Share Knowledge	 Work Together
 Secure Information	 Manage Identities	 Integrate Business Apps	 Find	 Answer	 Extend
 Explore	 Visualize	 Control	 Build apps	 Build sites	 Build for the cloud

# Document Management

Organize your documents with security.

- Document Libraries
- Media Libraries
- Form Libraries

With:

- Security
- Alerting
- Versioning
- Co-authoring

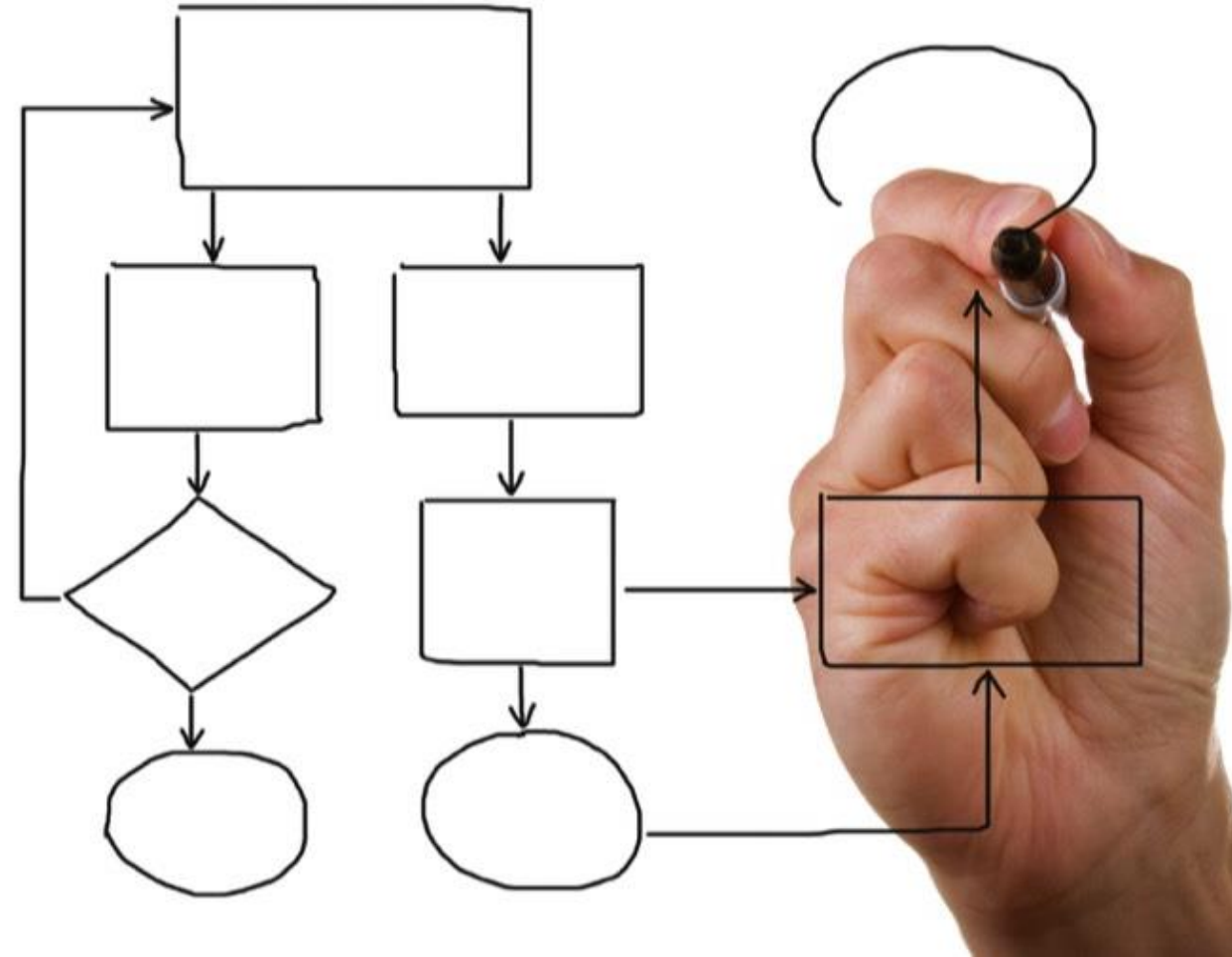




# Business Process Management

Organize your processes with:

- Workflows
- Business Logic
- Departmental Access
- Security
- Electronic or Digital Signatures
- Reporting
- Reminders
- Tasks

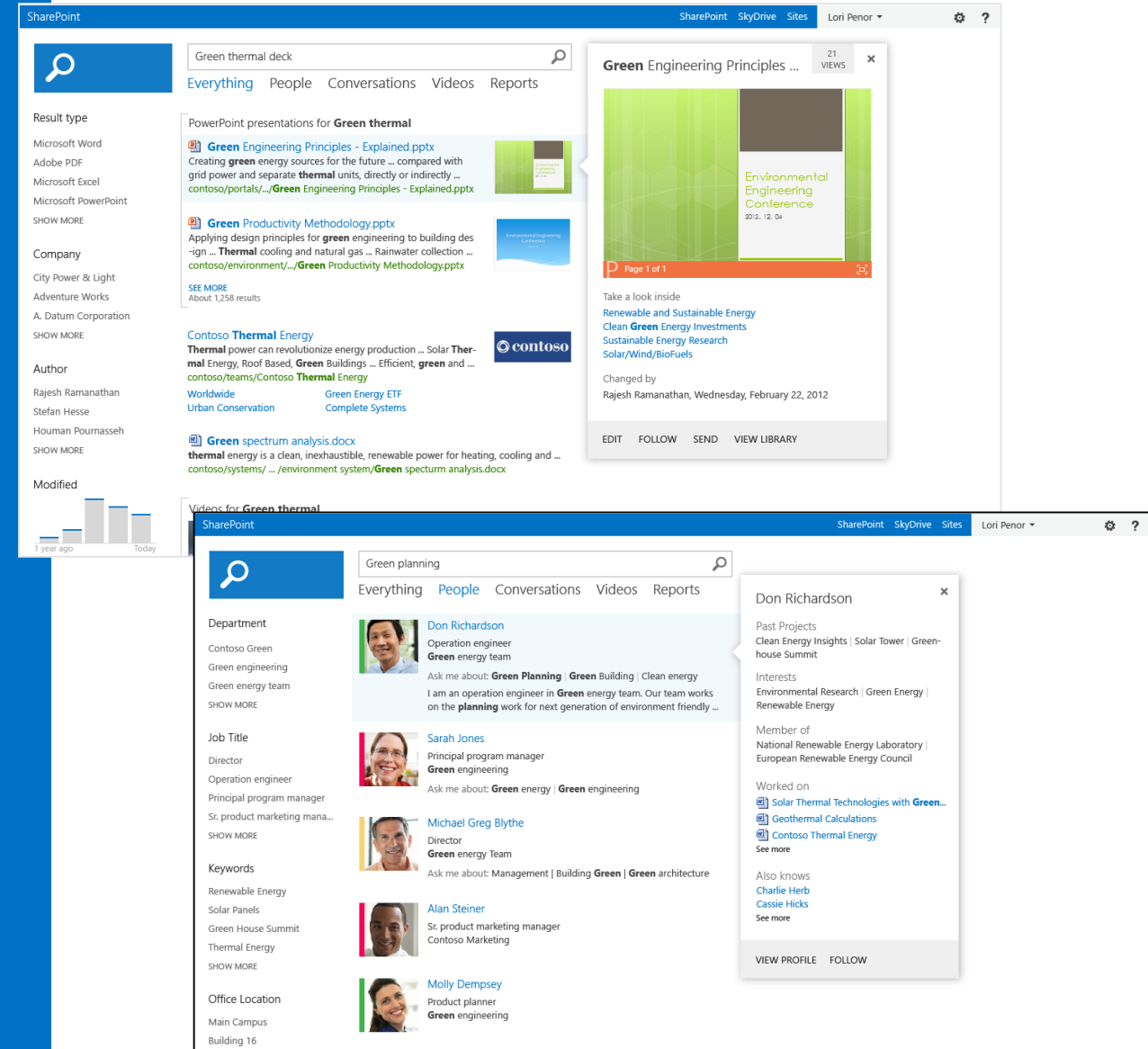


# Search

Search architecture with one unified search

Personalized search results based on search history

Rich contextual previews





# Mobile

Classic and Contemporary views for mobile browsers

Automatic Mobile Browser Redirection

Target different designs based on user agent string

Office Mobile Web Apps

- Excel
- PowerPoint
- Word

Push notifications



The top section shows three device screens displaying the Contoso website. The desktop screen shows a full-width layout with a navigation bar, a hero image, and several content blocks. The mobile screen shows a narrow, single-column layout with a search bar and a list of links. The tablet screen shows a wider layout with three columns of content.

**Site Master Page**

The site master page will be used by all publishing pages - the pages that visitors to your website will see. To use a different master page for mobile devices, first create Mobile Channels, then select a master page for each channel. If the desired master page does not appear, go to the Master Page Gallery in Site Settings and make sure the master page has an approved version.

You may inherit these settings from the parent site or select unique settings for this site only.

☐ Inherit site master page from parent of this site

☒ Specify a master page to be used by this site and all sites that inherit from it:

 This site is currently configured to use the "Automatic Mobile Browser Redirection" feature, which prevents specifying custom master pages for mobile channels. To disable this feature and allow mobile channels, click "Manage Site Features" page in "Site Settings."

WP7	Follow Default Channel
Smart Phones	Follow Default Channel
Slates	Follow Default Channel
Default	v15

☐ Reset all subsites to inherit this site master page setting



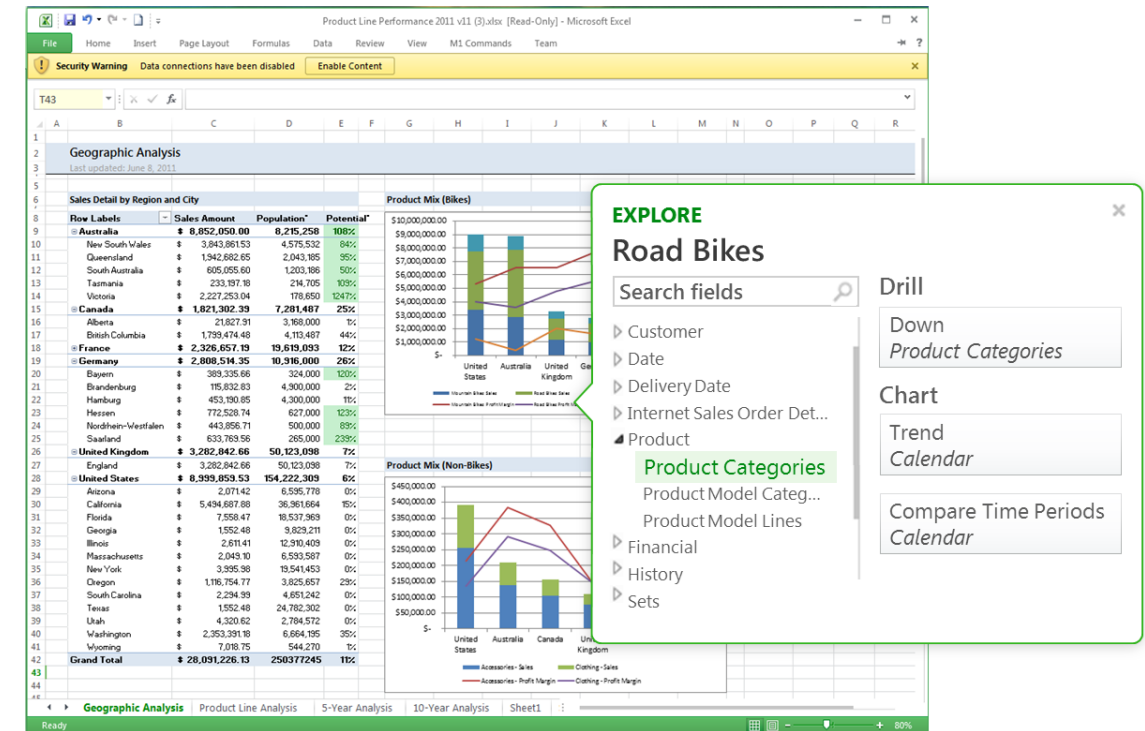
# Business Intelligence

## Excel BI

- Instant analysis through In Memory BI Engine
- Power View Add-in

## Excel Services

- Improved data exploration
- Field List and Field Well Support
- Calculated Measures and Members
- Enhanced Timeline Controls



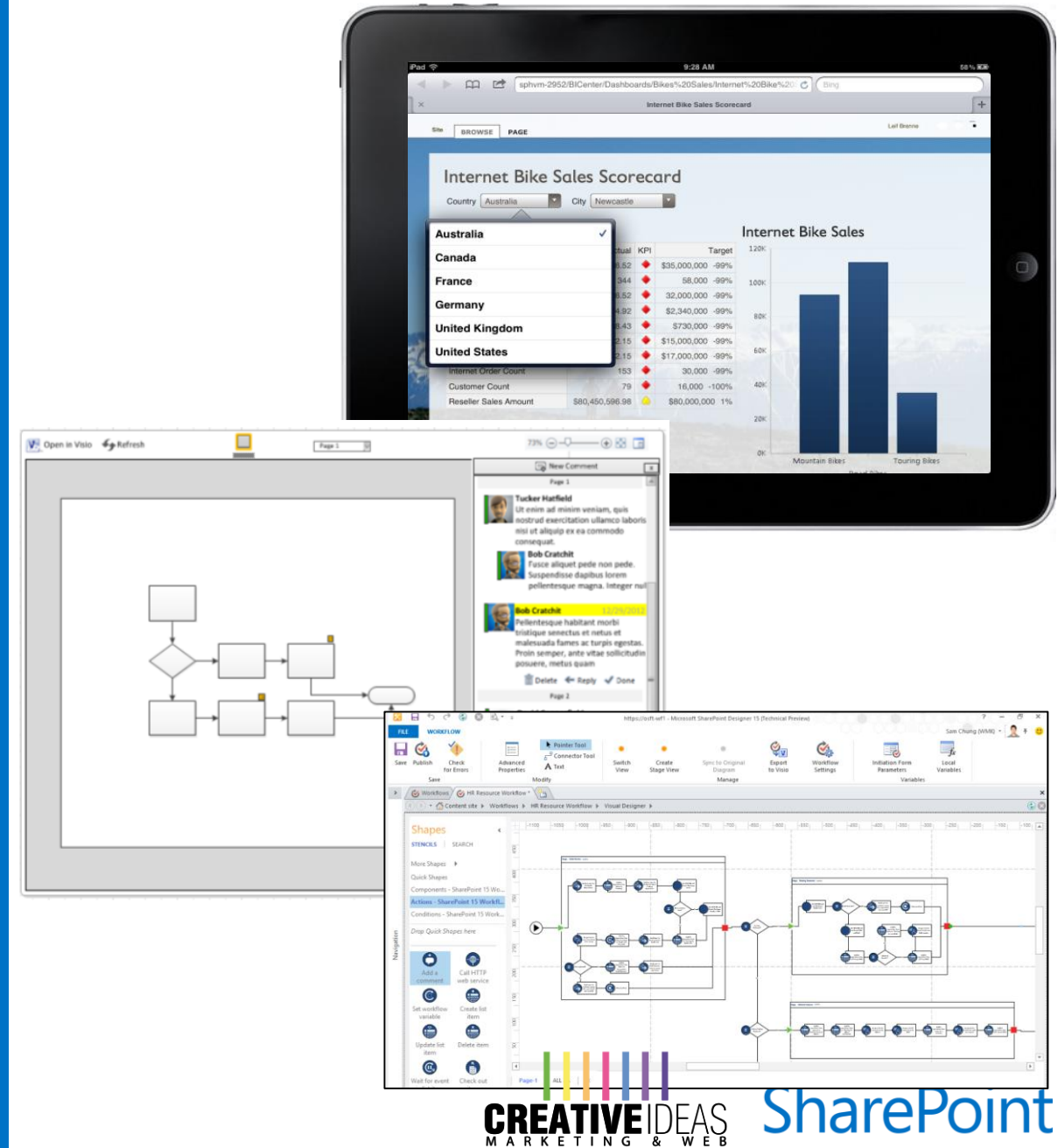
# Business Intelligence

## PerformancePoint Services

- Filter enhancements and Filter search
- Dashboard migration
- Support for Analysis Services Effective User

## Visio Services

- Refresh data from external sources – BCS and Azure SQL
- Supports comments on Visio Drawings
- Maximum Cache Size service parameter
- Health Analyzer Rules to report on Maximum Cache Size



# Our Solutions

## HR/Finance

- HR Recruitment Process
- Leave Request System
- Expense Reimbursement
- Employee Training

## Operations

- Project Management
- SOP Read and Sign
- Pharma Deviation Report
- Audit Management System
- Room and Equipment Reservation

Room Reservations - New Item

Cancel Paste Cut Copy Attach File Spelling

Clipboard Actions Spelling

Reservation Details Manager Vehicle Supervisor

Vehicle Type \* Mid-size

Vehicle \* Honda Accord

Pickup Date \* 6/13/2012 8 AM 00

Return Date \* 6/14/2012 12 AM 00

Pickup Location \* Airport  
Honda cannot be picked up at the airport

Business Justification

There are no items to display

Task Title:

Assigned To:

Due Date: 6/16/2012

Edit Item

Findings - Increased humidity in the storage room

View

Version History Add Alert Alert Me Manage Permissions Delete Item Manage Actions

General Additional CAPA

Item Description	Increased humidity in the storage room
Audit	IN-2012-Default Site-1
Description Of Finding / Issue	Broken humidifier sensor
Category	Major
Date Raised	3/15/2012
Priority	(2) Normal
Last Date	4/14/2012
Assigned To	Vladi Gubler

Content Type: Finding  
Version: 2.0  
Created at 3/15/2012 6:52 AM by Vladi Gubler  
Last modified at 3/15/2012 7:04 AM by Vladi Gubler

Close

# Our Solutions

## Sales/Marketing

- Sales Quote Generator
- Lead Management
- RFP Management System

## IT/Engineering

- Help Desk
- Bug Tracker

Service Requests - New Item

Edit

Save Cancel Paste Cut Copy Attach File

Commit Clipboard Actions

Details Resolution

Customer \*

Service Request \*

Details

Priority (2) Normal Assign priority to service request

Service Representative

Assigned To

Keywords

Add >

< Remove

New Entry

Save Cancel

Help Desk - Service Requests - All Items

Use this list to track and resolve service requests

Search this site...

Type	Service Request	Customer	Request ID	Status	Tasks	KB Article	Keywords	Create KB Article	Actions
Broken printer		Karen Lief	SR-2011-1	Initiated	Close	Printers		Create KB Article	Click for details
Title Assigned To Status Due Date % Complete									
Check printer cable		George Keenes		Not Started		1/5/2012			
Check print cartridge		Mark Rozen		Not Started		1/5/2012			

Add new item

Help Desk

Service Rep Home

Knowledge Mgr Home

Service Mgr Home

I need to...

Create Service Request

Create KB Article

Libraries

Knowledge Base









Lists

Service Requests

Request Tasks

Support FAQs

# Apps for Office and SharePoint

Products and platforms	Services and data
 	 SharePoint  Microsoft Dynamics  Windows Azure  bing  Microsoft SQL Server  Yammer



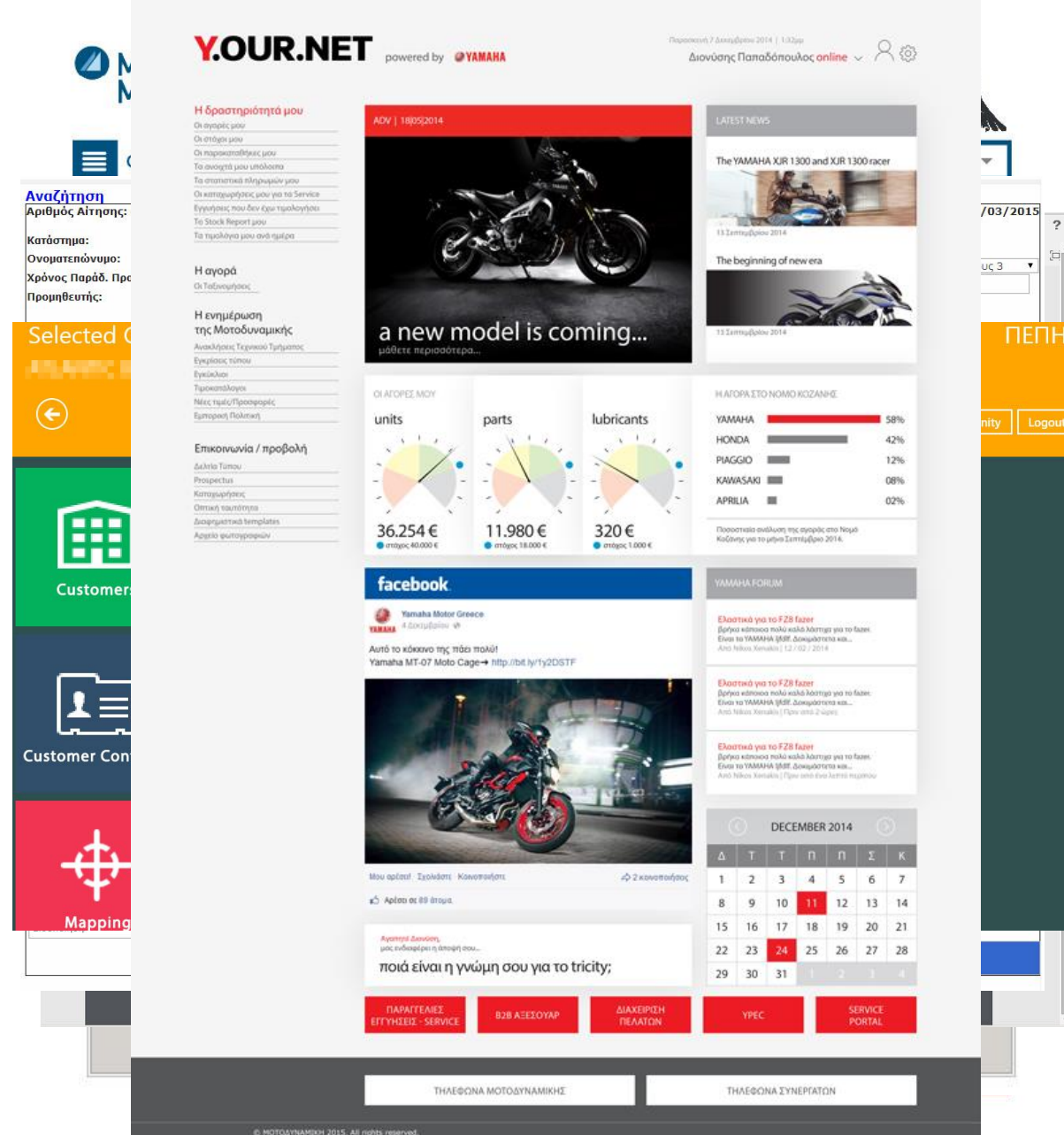
# Our latest Projects

**Yamaha Greece: Intranet / Dealer Portal**

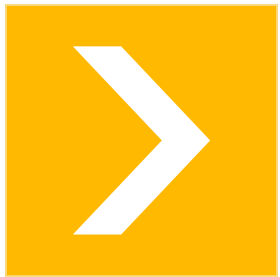
**Supermarket Kritikos: Internal Processes**

**Pharmathen: Internal Processes**

**Minerva: Internal Processes**



# Summary



SharePoint Server enhances the workload experiences by enabling new compelling scenarios that engage and work with the user.



[www.creative-ideas.gr](http://www.creative-ideas.gr)  
[business.creative-ideas.gr](http://business.creative-ideas.gr)  
[info@creative-ideas.gr](mailto:info@creative-ideas.gr)  
+30 2103234617